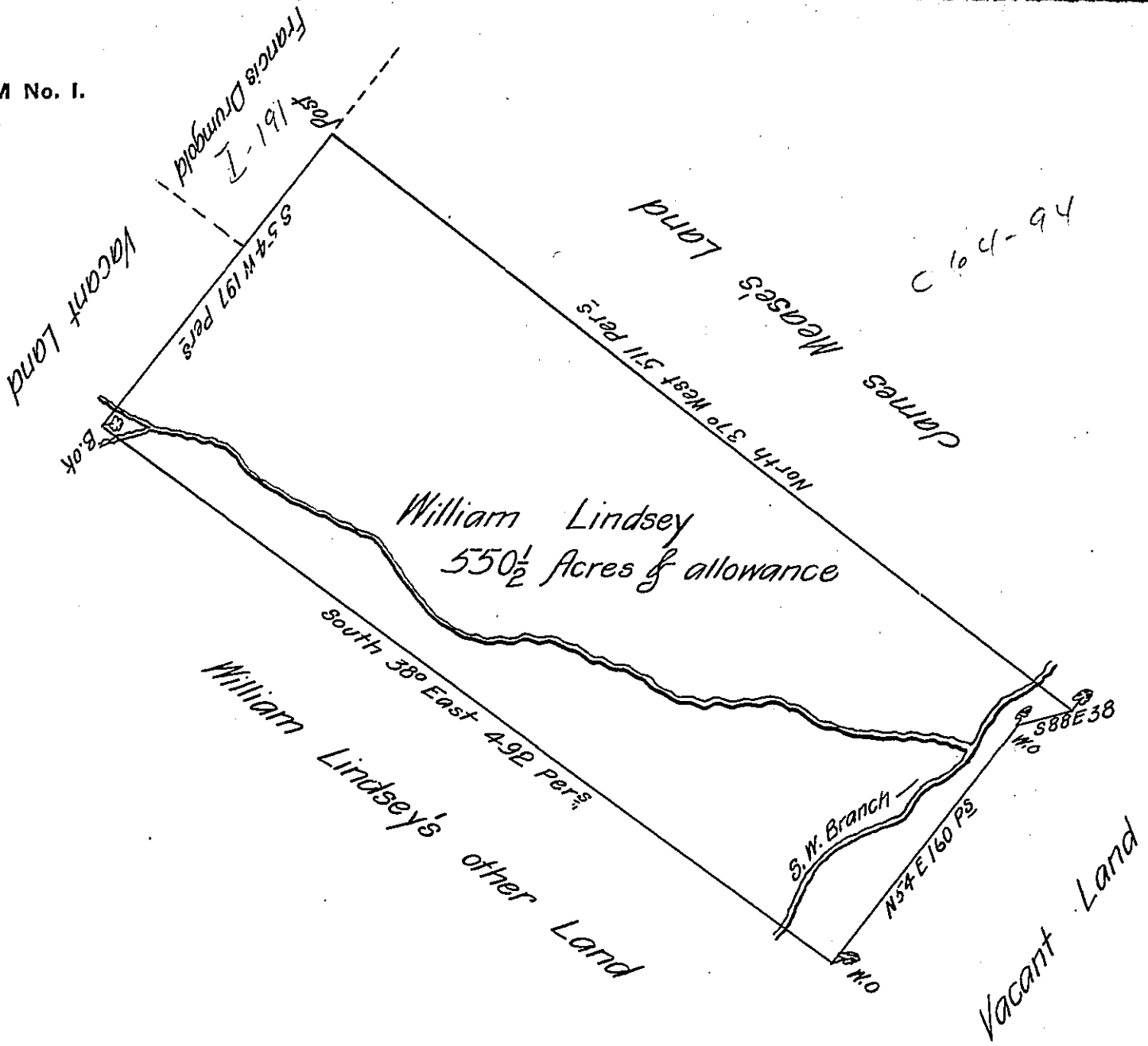


FORM No. 1.



A Draught of a tract of land situate on the South West Branch of Dunning's Creek in the County of Cumberland, containing Five hundred and fifty acres and ahalf and the usual allowance of six acres P Ct for Roads &c^o. Surveyed the 18th day of May 1765 for William Lindsey in pursuance of a Warrant dated the 3^d day of June 1763.

P- Richard Tea Dep^y Survey^r

To John Lukens Esq^r Survey^r General.

IN TESTIMONY that the above is a copy of the original remaining on file in the Department of Internal Affairs of Pennsylvania, made conformably to an Act of Assembly approved the 16th day of February, 1833, I have hereunto set my Hand and caused the Seal of said Department to be affixed at Harrisburg, this twenty fifth day of August 1905.

James P. Brown
Secretary of Internal Affairs.